



cristina
bertrand

art for the river



Yi Jing 53 – Gradual Progress
cristina bertrand

**The lonely tree
on the mountain
belongs to the
soul of the people...**

**... and a painting
can recover
the soul of
a river.**

VISIONS OF THE LOS ANGELES RIVER: RIBERA PROMENADE

Visions of The Los Angeles River: Ribera Promenade is a multicultural, multidisciplinary, educational exhibition and celebration at El Pueblo Gallery on Olvera Street and other facilities located in the **El Pueblo de los Angeles Historical Monument**.

The exhibit at **El Pueblo Gallery** will present paintings, sculptures, photographs and installations with the L.A. River as a unifying theme. A panel of scholars will present historical, geographical, artistic and literary perspectives of the river. Music composed specifically for the event will be performed at the Plaza Olvera

The day of celebration will take place on Saturday, November 22 from 10:00 to 4:00 pm. The exhibit at El Pueblo Gallery will be open to the public from the 22nd of November to the 31st of December of 1997.

The event has been organized by Cristina Bertrand and Cynthia D'Agosta.



VISIONS OF THE LOS ANGELES RIVER: RIBERA PROMENADE



Cristina Bertrand, an interdisciplinary scholar, is a humanistic and urban geographer, philosopher, painter and writer. She is a member of the Board of Directors of *Los Angeles City Historical Society*, member of the Advisory Forum of L.A. As Subject at the *Getty Center for the History of Art and the Humanities*, and an active member of several historical, geographical and artistic societies

Cynthia D'Agosta is an artist community planner. She is the *River Division Chief of the Santa Monica Mountains Conservancy* and *Mountains Recreation, Conservation Authorities* and the President Elect of the Southern California Chapter of the *American Society of Landscape Architects*. Ms. D'Agosta was a primary planner on the Los Angeles County River Master Plan and continues to be a leader on Los Angeles River Greenway project.

The project is endorsed by *The American Society of Landscape Architects, Aztlán Cultural Foundation, The California Council for the Humanities, El Pueblo de los Angeles Historical Monument, Friends of the Los Angeles River, The Los Angeles City Historical Society, Mountains Recreation Conservation Authorities and Santa Monica Mountains Conservancy*

**LOS ANGELES RIVER
AS IT WAS...**





**LOS ANGELES RIVER
AS IT IS**







LOS ANGELES RIVER AS IT SHOULD BE...



LOANGELES RIVER MASTER PLAN



**Rivers need
bridges
to embrace
their shores.**











art for the river

**at El Pueblo Gallery
Los Angeles**



Small white label below the artwork.



Small white label below the artwork.



Small white label below the artwork.







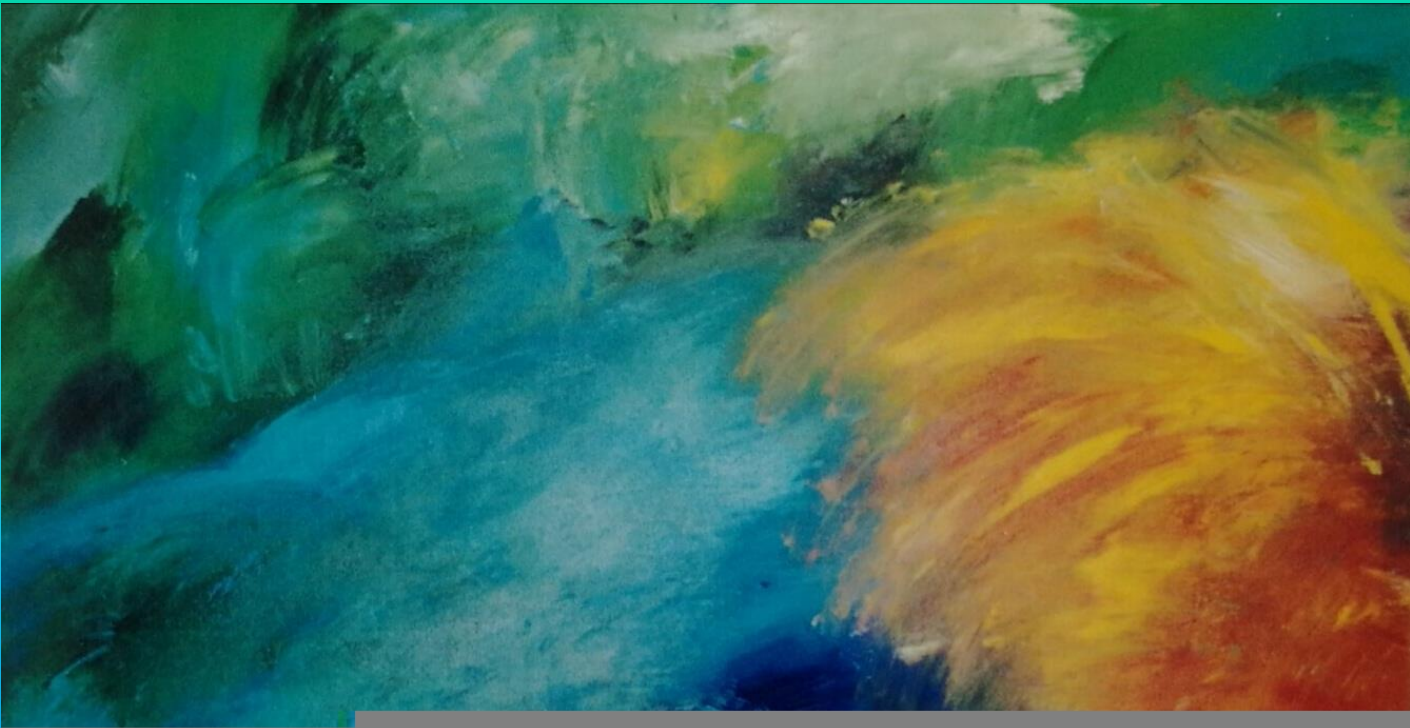












The Los Angeles River
will smile again.

crisrina bertrand